



BEACH to BUSH NEWS



A bi-monthly newsletter by Coffs Harbour Regional Landcare Inc.

Sept - Nov 2001

No. 4

...from our President...

Our AGM was held 1st August 2001 at the Coffs Harbour Regional Botanic Gardens meeting room and the new CHRL Executive is:

President & Chairperson	Dee Wallace
Vice President	Fiona McMullin
Secretary	Aaron Hartley
Treasurer	Tom Wild
2 Other Executive	Rus Glover, Ron Smith
DLWC rep	David Merrikin
CHCC rep	Morna Scott
Public Officer	Ken Dovers

Congratulations! On behalf of CHRL I extend thanks and gratitude to the out-going Office Bearers who have made a fine contribution to the organisation and to Landcare.

I look forward to working with the new Executive in 2001/2001.

- Dee Wallace, President

...from the S & D Officer

WOW, what can I say? It has been busy, busy, busy!

I have visited more groups in the last 2 months but still have a few more to go. A lot of work is being done by a lot of dedicated people.



The fox control program is off and running. The first baiting program had around 25 landholders taking part. The participation rate around Nana Glen and Karangi has been tremendous.

In mid August, Landcare Co-ordinators met at Yarrawarra to discuss a number of important issues. See report this issue. International Year of Volunteers 2001 Small Equipment Grants of \$5,000 are now available and I have sent out a form to groups requesting their equipment needs. Closing date for applications is 24th Sept.. Working from Carl Freeman's design, we will be having some dibble pots or cut 'n' paint stands developed for the groups. Hand mattocks are now available through Council.

It was an extremely exciting time at the Landcare Conference at Parkes with the Landcare Awards announced. Six out of the ten Landcare awards given went to groups on the North Coast!

Landcare Week was extremely successful with 2 radio interviews, the launch of the fox program, a colouring-in competition with 2 schools, and the combined working-bee at Dolman's Point, Sawtell. Congratulations go to Lloyd Foster for winning the Eileen Moody Memorial Landcare Award and to the Merit Certificate winners.

- Carolyn Woods



...from your Support Co-ordinator

Completed tasks at the office will be speeded up as I am now working for CHRL two days a week, usually a Wednesday and Friday. The

new era for our finance system is also under way with a cheque account at the Bananacoast Credit Union - and just in time too - before the new fees were announced. Group's money (the S1 A/c) will be moving into an S3 A/c because of our non-profit status

- Julie Hicks



CALENDAR

AUGUST - November 2001

- 7 Aug** Solitary Is. Marine Park Mgt. Plan presentation, SIMP Office, CH.
- 10-12 Aug** Northern Rivers Regional Landcare Forum - "Spirit of Landcare", Ballina RSL.
- 14 Aug** Ulitarra Conservation Soc. 30th Birthday, 7:30 pm, Botanic Gardens.
- 16-17 Aug** Landcare Co-ordinators' Workshop, Yarrawarra Cultural Centre.
- 22 Aug** CHRL Exec. Meeting, 5 pm, DLWC Conf. Rm.
- 29 Aug** UNCCMB Draft Catchment Plan presentation to stakeholders, 9:30 am, Urunga Golf Club.
- 31 Aug-1 Sept** NSW Landcare/TCM Conference, Parkes.
- 31 Aug -8 Sept** Landcare Week. CHRL Combined Working Bee and Awards, Sat. 8th Sept., Dolman's Point & Sawtell Community Bushcare Group
- 6 Sept** Launch of CHRL's Fox Eradication Strategy
- 7 Sept** National Threatened Species Day, colouring-in comp. with Woolgoolga, Mullaway & Sandy Beach Primary Schools.
- 19 Sept** Management Workshop, Community Village
- 21-23 Sept** Rural Women's Gathering, Kempsey
- 26 Sept** CHRL Exec. meeting, 5 pm, DLWC Conf. Rm.
- 29 Sept** Cochran's Pool/Urumbilum Field Day.
- 30 Sept** Big Scrub Rainforest Day, Rocky Creek Dam.
- 3 Oct** CHRL General Meeting, DLWC Conf. Room.
- 5 Oct** Comment to S.I.M.P.
- 7-14 Oct** National Weedbuster Week
- 20 Oct** Plant ID Workshop, Woopie Neighbourhood Centre, 9 am-2:30 pm
- 13-16 Nov** NSW Coastal Conf. "Making Waves - exposing gaps & exploring solutions", Newcastle.

WINNERS

2001 NSW LANDCARE AWARDS

Orara Valley Rivercare Groups Management Committee - Gold Award Winner - collected by Rod McKelvey.

The Committee is commended for its holistic approach to involving and developing the skills of members and all those they work with for the on-going repair and care of Coffs Harbour's water supply - the Orara River.

COFFS HARBOUR REGIONAL LANDCARE AWARDS

Lloyd Foster - Eileen Moody Memorial Landcare Award 2001.

Sawtell Community Bushcare Group - Merit Certificate.

David Callaghan of CROPO - Merit Certificate.

Coffs Harbour Jetty Dunecare Group - Merit Certificate.

PHOTOGRAPHS - go to p.8.



βχδεωψμνοπθρστξωξψζ

Birthday Celebrations

The Ulitarra Conservation Society celebrated its 30th birthday on the 14th August 2001. A most pleasant (and nostalgic) evening was held at the Botanical Gardens to note the occasion.

Long-term member, George Arnett, launched his historical record of the Ulitarra Society, and what an interesting and important publication it is. The book sells for \$15.00 (ring Carolyn if you want a copy).

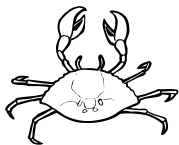
The Ulitarra Society started out as a conservation society and bush-walking group. Its original aims were to develop education programs, provide objective information, protect the environment and conserve native flora and fauna. One of their earliest members, the late Eileen Moody, gave many hours to the Jetty Foreshores. (As a result of Eileen's marvellous work, CHRL's annual Landcare Award is named in her honour).

Due to the rapid and somewhat rampant expansion and development of Coffs Harbour during the 70s and 80s, the Ulitarra Society was forced to take a more pro-active stance on environmental matters. The community in general are today most glad that the Ulitarra Society did so as we now have an urban environment that is pleasing to the eye, and of great value to personal well-being of the residents of Coffs Harbour, and surrounding districts in general.

The Ulitarra Society has recently obtained some funding from Council's Environmental Levy to tackle the Broad-leaf Pepper Tree and they now have commenced work on this problem.

Further, the Ulitarra Conservation Society can take much of the credit for the proposed Regional Park - from MacAuley's Headland to Arrawarra.

Well done Ulitarra! A Happy 30th Birthday and many more to come.



Ecological Importance of Mangroves

- from *Fishnote*, NSW Fisheries

Mangroves are permanent or temporary habitats for many aquatic animals. As the tide rises and submerges the mangrove flats, numerous fish move in to find food and shelter.

The floor of the mangrove forest is a habitat for extensive numbers of invertebrates - each square metre of sediment can hold up to a hundred of them. The most common are crabs and molluscs. Three commercially important crustaceans - King Prawns, Blue Swimmer Crabs and Mud Crabs - live in mangroves. Mangrove forests are important nursery grounds for juvenile fish.

The abundant plant material produced by mangroves is a source of food for estuarine animals. However, most animals do not graze directly on the mangroves; instead they feed on the detritus (decomposing plant material).

Microscopic fungi and bacteria first break down the mangrove litter. Then detritus feeders such as Mullet, prawns and crabs eat this decomposing material.

A single square kilometre of mangrove forest contributes about 600 tonnes of plant material each year to the estuarine food chain.

DID YOU KNOW ?

Anemone Bay, near North Solitary Island in the Solitary Island Marine Park (SIMP), has one of the most dense colonies of anemones and Anemone Fish in the world!

Big Scrub Rainforest Day

Sunday, 30th September 2001

9 am - 4 pm

Rocky Creek Dam

Now in its third, big year - BIG SCRUB RAINFOREST DAY is a day of fun, entertainment and information for the whole family.

Proudly brought to you by:

Richmond Landcare Inc.,

Big Scrub Rainforest Landcare Group,

Bushcare, Rous Water,

Environmental Training & Employment (NR) Inc.,

Lismore City Council,

Conservation Volunteers Australia,

Rainforest Rescue.

For more information, please contact Kerri Francis on 6627 0120 or kfrancis@dlwc.nsw.gov.au.

Bushcare Fencing Incentive Scheme

Greening Australia has funds to provide a rebate to landowners for fencing native vegetation remnants. This program, called the Bushcare Fencing Incentive, assists landowners to recover some of the material costs involved in fencing areas on their properties for improved farm management and conservation.

Private landowners in the North Coast catchments are eligible to apply for the rebate if they are planning to fence native vegetation remnants for stock control. Even those landowners who have already commenced fencing projects may be eligible for rebates.

The rebate is \$1.20/metre and is paid on completion of the fencing. Rebates for this final round of funding require the fencing to be in place by **30 March 2002**.

An assessment of your site can be arranged by contacting Ross Macleay, the Native Vegetation Officer at Greening Australia, Dorrigo.

The criteria for obtaining the rebate are that the land must be privately owned. The fence must be for keeping out stock. The remnant to be fenced should be native vegetation in good condition or at least native vegetation that has the potential to be restored. The last criteria concerning quality and type of vegetation can be assessed on-site by the vegetation officer.

If you are interested in finding out more about the Bushcare fencing incentive, please contact Ross Macleay on 6657 2411.

Why Rehabilitate Wetlands?

All wetlands share a common feature - they are inundated with water, either temporarily or permanently. They differ from rivers and creeks in that they are shallow and the water is usually slow moving or stationary. Areas flooded artificially for agricultural production (e.g. rice paddies) or other purposes are not classed as wetlands.

There are many different wetlands - floodplain wetlands, where water cannot escape to the sea; natural rock basins where water cannot soak into the soil; estuarine wetlands close to the sea. Some wetlands are permanently wet; others are ephemeral - holding water for only a few months in wet times.

Once regarded as wastelands, wetlands are now regarded as ecological heartlands. They provide habitat for fish, birds and other animals, mitigate the effect of flooding and improve water quality.



- Wetlands are of a particular benefit to landowners –
- forested wetlands may act as shelter belts, decreasing soil moisture loss from paddocks,
 - the presence of waterbirds can have significant benefits for insect control,
 - the re-flooding of wetlands can provide drought relief pasture and water for livestock.

Due to our neglect over the past decades, many wetlands have been altered from their natural state. It is estimated that since European arrival approximately 50% of all Australia's wetlands have been converted to other use, this rises to 90% in closely settled areas. (ANCA 1996). It is worth noting that:

- Approximately 70% of the fish caught by NSW professional fishers depend on wetlands in estuaries for part of their lifecycle. It has been estimated that this part of the fish catch contributes over \$200 Million per annum to the NSW economy (Copeland, 1996),
- Wetlands provide feeding, breeding and roosting areas for wildlife, including birds like egrets and ibis that eat large numbers of grasshoppers and other insects in the surrounding district.

CHRL has a *Wetland Rehabilitation - Getting Started* Manual at its office, which can be borrowed..



LANDCARE

Landcare groups are independent and autonomous but they often work closely with government and other organisations to achieve results. There are more than 1500 landcare groups across NSW that have achieved a great deal in improving the management of our natural resources. As well, they have raised community awareness of the importance of sustainable natural resource management. The lead NSW Government agency for landcare is the Dept. of Land & Water Conservation – from www.landcare.nsw.org.

Landcare is based on the concept and practice of community volunteers providing their time and energy to identify, plan and implement on-ground works to address environmental issues at the local or community level – from *The Future of Landcare Discussion paper, Aust. Landcare Council*.

There are 370 landcare groups in the North Coast Region and 17 landcare networks operating across the region.



NSW COASTAL PROTECTION PACKAGE

The Premier and Deputy Premier announced on 26 June 2001 an \$11.7 million coastal package to protect the State's beaches and headlands for future generations. The key elements of this package are:

- ✦ Comprehensive Coastal Assessment,
- ✦ Coastal Protection State Environmental Planning Policy (SEPP),
- ✦ Coastal Water Quality Management Strategy,
- ✦ Extending and Up-dating the Coastal Policy,
- ✦ Amendments to the Coastal Protection Act,
- ✦ New Coastal Zone Management Manual,
- ✦ Other initiatives.

For further information, see the Dept. of Urban Affairs and Planning at www.duap.nsw.gov.au

VOLUNTEERS and AUSTRALIA POST

Australia Post is celebrating the International Year of Volunteers (IYV) by offering all Australian volunteers and employees of volunteer organisations the opportunity to obtain a special sheet of **10 Personalised Stamps** as formal recognition of their efforts and an unique memento of the year.

These personalised stamps are valid and attached to the side would be a photo of a person or the organisation's logo. Personalised stamps are a very special way of recognising the contribution of individual members of your organisation as well as promoting the organisation and its activities. They come in sheets of 10 and each sheet has been designed so it can be customised to include the organisation's name and logo.

To support the IYV, Australia Post is offering the sheets of customised Personalised Stamps at the low price of \$12 and Australia Post will donate a further \$2 for every sheet sold.

LANDCARE AUSTRALIA LTD. (LAL)

ATTENTION LANDHOLDERS – the **LANDCARE GREENHOUSE CHALLENGE** is a voluntary Commonwealth project where farmers and businesses undertake cost-effective actions that can reduce their greenhouse gas emissions and lead to increases in productivity. In partnership with the Australian Greenhouse Office, Landcare Australia is undertaking the task to find out how much greenhouse gas is produced on farms and in what areas savings can be made. This will help reduce the amount of greenhouse emissions and save the farmer valuable dollars as a result of their efforts. By participating in the Greenhouse Challenge, landcare groups and farmers are indicating their commitment to: (1) prepare an inventory, (2) develop an action plan, and (3) report on progress and performance.

Benefits to your landcare group:

- Promote your group as a leader in landcare,
- Generate new relationships,
- \$1,000 for your group's participation,
- Receive regular updates & info on greenhouse emissions,
- Raise the profile of your landcare group via the media.

To be part of the Greenhouse Challenge, send in an E.O.I. form or call 1800 155 180. More details & forms at the CHRL Office.

WHITE PAGES – Landcare will be featured on the front cover of the next White Pages.

NATIONAL LANDCARE WEEK 3-9 SEPTEMBER – LAL this year will be conducting a media only campaign for Landcare Week. This involves posters featuring cricketer and property-owner, Glenn McGrath, at a number of poster sites around the country. Glen will also do media-related activities educating the general public on what they can do to become a part of landcare and encouraging people to support the companies that support landcare.

Rural Women's Gathering

The NSW Rural Women's Network organises women's gatherings in country NSW every year and this time Kempsey is the host town. The festival is held from Friday, 21st to Sunday, 23rd September at the Kempsey Showground. This year's theme is **"Unity in Diversity – exploring the lives of women from federation to millennium"**.

The program includes workshops on Women in Business, Management of Native Grasses, Water Management, Women's Health, Change in the Dairy Industry, Tractor Safety, Women in Local Government, as well as a number of artistic and musical sessions.

This program is certainly diverse and in the mornings, women have a choice between attending a church service, yoga or Tai Chi session. The Keynote Speaker is Madeleine Randall from ABC Radio.

For further information and for registrations, phone 6562 5146 or e-mail to kemphh@midcoast.com.au.



– from Bellingen Landcare Inc. Newsletter

Research Grants

Land and Water Australia aims to generate knowledge informed debate and innovation in sustainable natural resource management. It is currently focussing on research in sustainable primary industries, future landscapes, river landscapes and vegetation landscapes. They are calling for **applications for Postgraduate Scholarships**, Travelling and Visiting Fellowships for research in these areas on the themes of perceiving and valuing, learning and understanding, organisation and governance, and living and managing.

More information is available on 6263 6003, or e-mail chris.louis@lwa.gov.au. Applications close 19 Oct 2001.
- from Bellingen Landcare Inc. Newsletter

CHANGES TO THE ZONING IN S.I.M.P.

Comments on the change to the zoning in the Solitary Islands Marine Park (SIMP) need to be in **by the 5th October**. There has been a big push by the fishing lobby for changes. Copies of the plan can be seen at the Marine Park Offices or at the DLWC.

NATIONAL WEEDBUSTER WEEK 7 - 14 October 2001



In keeping with the International Year of the Volunteer, the theme is "Local Heroes - Global Champions".

National Weedbuster Week is designed to increase weed awareness and encourages individuals to participate in one of a hundred weed-related activities around the country. We are invited to support and promote the Week and to join in organising activities that will assist in achieving both your objectives and those of Weedbuster Week.

Promotional and weed awareness material is being organised by Coffs Harbour Regional Landcare and we will be co-ordinating a display on environmental weeds with Coffs Harbour City Council.

More information at www.weedbusterweek.info.au/nsw.

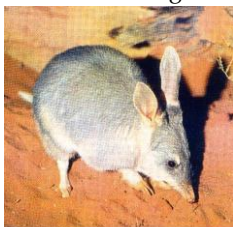
SMALL NATIVE MAMMALS and SOIL-BUILDING PROCESSES

- from Australian Farm Journal, May 2001

Small Australian mammals such as bettongs, potoroos, bilbies and bandicoots use their long claws and strong forefeet to turn over plant litter and dig shallow pits, scratchings and holes when foraging for a variety of foods that includes fruits, seeds, roots, insects, fungi, tubers and invertebrates.

During the foraging process they turn organic matter into the soil, spread mycorrhizal fungi and seeds and their diggings provide a perfect bed for seeds to germinate in and allow rainfall to be easily absorbed. Although the numbers of these small animals were quite high and widespread throughout Australia at the time of settlement, their nocturnal habits meant they were not often seen and rarely studied.

Possums, bettongs, and small wallabies once kept the country clear and open and prevented large fuel loads from building up by feeding on new seedlings that germinate after rains or fires. Potoroos, bettongs and bandicoots turned the leaf litter and bark into the soil when foraging, making it less combustible. These animal interactions resulted in fires that were generally cooler and slower burning with less damage to plants and animals and consequently little change to the make-up of the landscape. This provided conditions for a wide variety of species in an area rather than a predominance of a few as so often happens today following regular hot wild fires and repeated prescribed burns.



WATER REPELLENT SOILS:

Common to many areas are soils that are non-wetting or water repellent. This usually is apparent as a crust-like surface feature that acts as a barrier to an underlying wettable soil. The foraging actions of small native mammals provide sites for water to infiltrate. On non-wetting soils, the activity of native animals has been shown to also improve water-holding capacity.

CAMPBOR LAUREL KITS

"Manage your Camphor Laurel - don't just control it!"

Order your Camphor Laurel (CL) Kit today, containing over 140 pages of info on control methods, protecting native flora & fauna, replacement species, declaration details, other legislation, value-adding, positives & negatives of CL, where to go for advice, many photos, distribution maps and drawings to assist you.

Basic kit- \$20. Hard cover version- \$24 (incl. P&H and no GST).

*An initiative of the Camphor Laurel Taskforce of the North Coast
Weed Advisory Committee.*

Order forms are available at the CHRL office.

REPORT FROM THE Landcare Catchment Management Forum 2001, Parkes

by Carolyn Woods

The State conference (held **31st to 1st September**) is a biannual event and this year was held in Parkes. The highlight of the conference (apart from the Kangaroo and Lamb sausages) was the presentation of the Landcare awards. The north coast was celebrating with 6 out of the 10 winners going to North Coast projects. The Orara project won the gold award for the Rivercare section.

There was some discussion on the change to regional approach to planning in catchment management. The important point to highlight from discussions was regional investment will be targeted at projects that are strategic and larger. It is not clear how smaller projects will be supported.

Professor Mike Archer gave an inspiring presentation on native fauna being used as pets and the use of Kangaroos as livestock.

Mr Brian Scarbrick, Chief Executive Officer for Landcare Australia Ltd, gave an address on the "health" of Landcare and if it is making a difference. Recent articles in the Sydney Morning Herald have questioned Landcare's contribution to natural resource management. A major concern to everyone is clearing in Queensland is outstripping tree planting across the country. There were comparisons made between the UNE study by Reeve (2001) with studies by the Australian Bureau of Agricultural and Resource Economics (ABARE) and studies by Alan Curtis at Charles Sturt University.

The figures for the number of landholders in landcare groups varies considerably. On average 40% of landholder groups are members of landcare groups across Australia. ABARE (2000) found 38%, Reeve (UNE) 43% and Curtis 50% (just in Victoria) of landholders in groups.

ABARE found that, compared with non-members, landcare members were;

- * 88% more likely to exclude stock from land degradation areas,
- * 30% more likely to preserve or enhance conservation areas,
- * 20% more likely to maintain riparian vegetation in the last two years.

The other studies found landholders involved in landcare activities had a greater awareness of natural resource management issues and usually acted upon them.

Coffs Harbour Regional Landcare (CHRL) has about 38 groups, with approximately 250 members, 6 groups focussed in rural areas, 2 school groups, 2 environmental organisations and the others focussing in coastal areas.

WE ARE MAKING A DIFFERENCE!



COMMUNIQUE NO. 9 - 20th July 2001
INVESTMENTS TO MEET NATURAL RESOURCE RESTORATION

The ninth meeting of the UNC CMB was held at Coffs Harbour on 19-20 July 2001. Specific outcomes from this meeting included:

- ✦ All actions within the Plan were costed over the life of the Plan. These costings will enable the channelling of natural resource investments to the areas of highest priority.
- ✦ The Draft Plan currently includes 2 sets of strategies, being Area-based (landscapes) and issue-based. The area-based strategies enable the integration of all of the strategies required for high priority localities.
- ✦ The Board considered the next phase of community consultation with forums planned around the 3 catchments. These forums will focus on providing concise information relative to the Draft Plan and seek feedback from those attending. These forums will take place from 16 Aug. to 7 Sept, from Old Bonalbo to Urunga (7 locations in all).

Upper North Coast Catchment Management Board's (UNCCMB) Draft Catchment Plan



The UNCCMB conducted a consultation session for Landcare representatives and other stakeholder groups from the Bellinger and Coffs Harbour areas during Aug - Sept.. Julie Woodroffe, Chair of the UNCCMB, Kay Morrison, Ted Knoblock and Alan Jeffery, members of the UNCCMB presented aspects of the Board's Draft Plan.

The NSW Government initially described the framework for the planning process for the UNCCMB. This process involved the Board developing **objectives, catchment and management targets** as well as **strategies, an action plan, costings and responsible agencies**. The 4 broad targets identified by the Draft Plan are: RIVER HEALTH, BIODIVERSITY, LAND-USE PLANNING and LAND MANAGEMENT (*see insert with this newsletter*). The targets are based on measurable achievements over the next 10 years.

The Draft Plan has 2 major components - AREA-based and ISSUE-based. In the Coffs Harbour area there has been a number of Area-based targets identified, including -

- The short coastal catchments around Coffs Harbour - improving soil health status of cultivation/horticultural areas,
- Bonville creek - Improve the quality/quantity of riparian vegetation and protect/rehabilitate stream structure,
- Emerald Beach & Sandy Beach - Identify opportunities to enhance natural resource values within the sub-catchments of areas and introduce suitable landuse planning measures,
- Horticultural steep lands - encourage best management practices for high-risk land types and activities,
- Upper and Mid-Orara, Bucca Bucca - Improve the quality/quantity of riparian vegetation and protect/rehabilitate stream structure,
- Upper, Mid & Lower Orara, Bucca Bucca - develop and implement Water Sharing Plans that determine allocations and extractive rules for environmental water & extractive

users, and assist licensees with implementation of these rules,

- Short Coastal Catchments - Rehabilitate 700 ha of steep agricultural/horticultural land.

If you require further information on these actions please come and see Carolyn at the CHRL Office.

REPORT FROM THE Landcare Co-ordinators Workshop, Yarrowarra
by Carolyn Woods

Bush Fire Risk Management Planning (BFRMP) - a presentation by Ian Thomas and Phil Redpath DLWC.

Fire Districts are under the authority of the NSW Fire Brigades and Rural Fire Districts under the authority of the NSW Rural Fire Service. A Fire Control Officer is appointed to one or more fire district(s). For each district a Bush Fire Management Committee is formed. These Committees have several functions including formulation of a Bush Fire Risk Management Plan and a Bush Fire Operations Plan. Both of these plans become the Bush Fire Management Plan. The plan remains in force for 5 years. The plan needs to take into consideration ecologically sustainable development.

A bush fire management plan outlines schemes for the reduction of bush fire hazards in the rural fire district. The plan has powers to restrict or prohibit the use of fire or other particular fire hazard activities in all or specified circumstances.

In Coffs Harbour the Bush Fire Hazard Plan has already been developed. The Operational Plan is in development.

There is a nature conservation representative nominated to each committee. The NCC representative for this area is Greg Elks, DLWC representative is Frank McLeod; and Coffs Harbour City Council is represented by Tony Blue. The Fire Control Officer for this area is Warwick Roche. Warwick has agreed to come and discuss the Bush Fire Management Plan and other matters for this area at CHRL's December meeting.

The section below outlines the outcomes that Phil Redpath thought were important to consider. The overriding message is..... contact with your local Rural or Urban Fire Captain with information exchange is important.

How Does BFRMP Apply to Land/Dune Care Projects?

The last bush fire season (2000-2001) resulted in the partial destruction of community-based native vegetation restoration projects. Some of the issues surrounding the actions leading to the incidents included:

- Extreme bush fire conditions;
- Poor lines of communication between the volunteers protecting life and property and the groups involved in the projects;
- Lack of locational information available to volunteer and professional firefighters on project locations;
- Excess fuels left within project areas, usually as a result of weed removal and clean-up.
- Lack of bush fire protection considerations in project planning and implementation phases;
- Lack of knowledge at all levels of community and Government on the relationships between BFRMP and land management.

What can Land/Dune Care do in the future?

When developing the next Landcare or Dunecare project you should consider the following:



Location - is the project area vulnerable to bushfire, either as a result of arson (close to urban interface), wildfire from flammable native vegetation (eg heath) or land management activities (grazing or annual fuel reduction burning)?

Planning -

Local: Contact your local Rural Fire Service and ask for advice on what matters you should consider when planning for bushfire protection (eg dominant wind direction, water availability, access, topography etc), and how to plan for those matters into your project

(eg Asset Protection Zones (APZ), Strategic Fire Advantage Zones (SFAZ) etc). Provide local brigades with location information and maps for your project detailing APZ, firebreaks etc.

Regional: Develop risk management strategy tables and have them incorporated into the local BFRMP.

Implementation – in order to protect the works from bushfire, the works identified in the planning stage must be implemented (eg the creation of a 14m wide slashed firebreak on the western boundary of the project area). Maintenance of the firebreak will need to be undertaken pursuant to the risk of the surrounding landscape.

More information on the NSW Rural Fire Service can be found on the web at www.bushfire.nsw.gov.au

LOCAL LANDCARE AWARDS 2001

Jenny Bonfield, Julie Woodroffe , Lloyd Foster, Carolyn Woods

Mayor Jenny Bonfield with
David Callaghan of CROFO

The Sawtell Community Bushcare Group receiving their Merit Certificate from Julie Woodroffe (UNCCMB) and Cr Jenny Bonfield.

The Coffs Harbour Jetty Dunecare Group were winners too.

NHT WINNERS

2001/2

- **COFFS HARBOUR REGIONAL LANDCARE INC.** has received \$55,600 of continuing funding.
WE LIVE AGAIN!
- **ORARA RIVER GROUP** has received additional funding of \$140,000.

RE-CYCLE / SWAP CENTRE



CHRL is looking for 3-litre plastic milk containers!. Please drop off to Office or bring along to next General Meeting for collection. CHRL has recycled produce store bags (strong) that can be used for rubbish removal. Phone Dee on 6656 1008.

Anybody have any quality items for recycling? Advertise it here!

SPOTLIGHT on...

Coffs Harbour Jetty Dunecare Group
Emerald Beach Dunecare Group
Mullawarra Dunecare Group
Sandy Beach Dunecare Group
Ulitarra Conservation Society
West Coffs Creek Landcare Group

For participating in National Tree Planting Day -
WELL DONE!

Newsletter contributions NEEDED !

Coffs Harbour Regional Landcare Inc.

CONTACT DETAILS

PHONE: 6653 0116 or 6653 0118

FAX: 6652 3936

E-MAIL: cwoods@dlwc.nsw.gov.au

POST: P O Box 582, Coffs Harbour, 2450

OTHER CONTACTS

Support & Developm't Officer, Carolyn Woods	6653 0116
Support Co-ordinator, Julie Hicks	6653 0118
President, Dee Wallace	6656 1008
Bush Regenerator, Aaron Hartley	6648 4882
Coast Care, Lachie Whetham	6568 0224
C.H.C.C., Morna Scott	6648 4875

SUPPORTED BY