



Coffs Harbour
Regional
Landcare

Coffs Harbour Regional Landcare Inc.

Issue

Winter 2017

71

Bush to Beach News

Important Dates:

Chilli Fest, Sawtell	1 July
Orara Fair re-scheduled	16 July
CHRL Executive meeting	12 July
National Tree Day, Coffs Harbour Jetty	30 July
AGM & Gen. meeting with presentation about Wild Dog Research	2 August
CHRL Awards Day, Jetty Foreshores	10 Sept
Curry Fest, Woolgoolga	23 Sept

President's report

Back in spring 2015 I commented on research highlighting the positive psychological and cognitive outcomes of the presence of vegetation in our lives. Just recently I read a story about modern hygiene and related practices. Mention was made of the term "microbiome" which in simple terms is the component of microorganisms in our bodies. This varies continually and is affected by age, health, diet and even where we live. This report suggested that it is beneficial to spend time in the fresh air, particularly in rural areas. The belief is that green vegetation is restorative – it helps re-populate our microbiome with good microbes in the gut, skin and airways.

My take on this is that those of us working outdoors with Landcare gain health benefits we are not aware of!

Over recent years I have become more aware of the impacts of climate change and last summer has certainly brought home to me that these long sustained periods of extreme heat could be an example of this growing climate change phenomenon. As we know, the repercussions vary widely. Until approximately five years ago various weeds always had predictable flowering times, particularly Groundsel Bush and Crofton Weed, both of which I had a marked interest in. Since then flowering times are significantly later, more variable and longer.



These happenings make it all the more important to have new weeds identified as soon as they are seen (don't wait until they become established) and take steps to control them as early as possible. Should you find a plant not known to you and new to your site, arrange to bring a sample into the office for identification or ask Aaron Hartley at Council.

No doubt all groups and volunteers are enjoying both their work and the company of friends while working on their project sites.

Best wishes,

Barry Powells

Changing roles

Mel and Pia have swapped some of their roles / responsibilities. Mel is now the 'Landcare Coordinator' and looks after the Blueberry project that we will continue with LLS. In that role she also supports our members and groups as well as our Executive with governance issues, meets with LLS and with the other two Landcare networks in our region (Clarence and Bellingen) and engages with our partners in the Jaliigirr Biodiversity Alliance and elsewhere.

Pia has swapped those roles against the Targeted Landcare Project, which includes the Indian Myna control project. Together with this swap is an increase of work days for Mel from 2 to 3 days per week (Mon, Tues, Thurs) and a decrease for Pia to 2 days per week.

BUT while Jude is on long service leave, Pia will step up to a third day again in order to look after the Environmental Levy project, memberships and payments. (Mon/Tues/Wed)

Jude will be away from mid July until late October. She is currently working very hard to finish all the accounts for the auditors. We wish her an enjoyable and exciting time and already look forward to her return!

Mel continues to look after the logbooks and the website while Pia does the newsletter and any posters.

We both share the support for the nursery but it is easier for Mel to visit there as she lives close by.

Supported by



Local Land
Services
North Coast



Page 1



Membership fees are now due

Member subscriptions for Coffs Harbour Regional Landcare are due and should be paid by 31st July 2017.

Membership fees are \$5 per individual (children are free when parents are financial members, however we still need a completed member form for children).

Site coordinators should collect fees and update contact and medical details for volunteers at their site and submit forms and fees to the office.

Site coordinators should also:

- Update first aid kits and replace any expired items (place an order through the office)
- Get members to check PPE (overalls & shirts) and replace any that is worn out or has been washed 70 times
- Complete Log books and submit the entire log book to Mel by 12th July
- Remind all volunteers of the Code of Conduct which they signed on joining CHRL.
- Check tool kits and ensure that all tools are working and fit for purpose.

Individual members who are not site volunteers are required to submit a member form and subs to the office.

Thank you to those members and site coordinators who have completed their membership renewals so promptly and diligently, you make our job a lot easier.

2017-18 Environmental Levy Project

Unfortunately at its recent June meeting Coffs Harbour City Council deferred the acceptance of the recommendation of their Environmental Levy Committee. Councilors have asked to be briefed on the recommendations, and the matter will not come before Council again until the meeting on July 13th. At that time they may adopt some or all of the recommendations, or choose to reject them entirely. The best we can hope for is that Council accepts the committee's recommendations and our volunteer support programme will be well funded for the 2017-18 year. The funds will arrive a little late and on-ground works may be delayed by a few weeks, but we are confident that Coffs Council will continue to support the valuable on-ground efforts of our hard-working volunteers.

Site coordinators who have submitted Expressions of Interest for funds for on-ground works at their sites will be advised as soon as we receive confirmation from Council.

Tools Maintenance Training Day

Steve and Pierre from 'Generation Green' recently held a very well attended and informative tools training day at our office. Site volunteers brought in their Landcare tools and learnt how to clean and sharpen them, and maintain them in good working order.

Volunteers also left with a few extra tools for their kits to help them keep their tools sharp.

Some volunteers were so inspired they went home and sharpened all the tools in their site kit! We expect some extra sharp work up Mullawarra way in coming months.



Vale Timothy Ryan, 1955-2017

Tim passed away surrounded by family on Saturday 24 June 2017. He is survived by his son, Bill Ryan.

Tim has been a coordinator at Nambucca Valley Landcare for 19 years.

Tim was a great colleague and a friend, always supportive and good for a laugh and a hug.

During his time with Nambucca Valley Landcare, Tim became quite an expert in river restoration works and he had a very good rapport with local farmers. He knew



his 'patch' from the coast to the hills, knew how to read the landscape and understood revegetation very well.



Sapphire Reserve Site Report

In early June Landcare volunteers at Sapphire Reserve carried out some extensive work in conjunction with Lyndy Rees, NPWS ranger. The work on the southern side of White Bluff headland at Sapphire involved the closing of two tracks, the establishment of one new track and fencing and planting to clearly delineate the track.

40 lomandra, 6 coastal wattles and 6 tuckeroos were planted, which were all supplied by the CHRL community Landcare nursery at Woolgoolga and NPWS supplied



mulch, stakes and protectors for the new plants.

The area is often subjected to strong southerly winds with wind shear of the surrounding vegetation a constant problem. As a result, we had to ensure that all the new plants are well protected from wind damage (see photos). Watering was not an issue as three days after the plants went in the area experienced over 100mm of precipitation. Our Landcare members will now closely monitor the area while the plants acclimatise to their new environment.

Greg Robinson, Site coordinator, Sapphire Reserve

Thanks Happy Frog!

Kim Towner, the owner, inspiration and energy behind Happy Harbourside Markets and the Happy Frog has shown her gratitude and support for our hard-working Landcarers by donating more "Froggy Dollars" vouchers to our volunteers.



It is great to see our hard work recognised and appreciated by local businesses. We thank Kim and the Happy Frog for their continued support.



National Tree Day at Jetty Dunecare



Jetty Dunecare is conducting a working bee for National Tree Day on as part of their Environment Trust project.

Sunday 30th July from 9 am. Meet at the Coffs Fishing Club top carpark.

All tools as well as morning tea will be provided.

Please wear closed in shoes, a hat and bring your water bottle.

Everyone is welcome to come and meet with some of your other Landcare members.

Working for Plastic-free Oceans

A dedicated team of volunteers picked up litter around Moonee Beach on a recent sunny Saturday morning. The event was organised by Louise Hardman of the 'Pacific Collective'.

Louise is the brains and passion behind an innovative solution to plastic waste which recently won her the major award from Start Up Coffs Coast:

<https://www.coffiscoastadvocate.com.au/news/start-up-cleans-up-to-win-comp/3191761/>

At the heart of the project is the "shruder", a mobile machine that is a hybrid of a shredder and extruder. Louise's aim is to keep plastic out of the ocean and off our beautiful beaches: "I'm actually working towards

being no longer in business, no more plastic in the oceans is the goal."



From left: Louise Hardman, The Pacific Collective, Matt Smith, The Zero Waste Society and Jude Turner at the Moonee Beach clean up.



NSW Travelling Stock Reserves Review

The NSW Government is seeking the community's input on the Travelling Stock Reserve (TSR) network in NSW to ensure it remains connected, viable and well maintained.

There are more than 6,500 TSRs on Crown land in NSW, covering approximately two million hectares. *Five reserves are in the Coffs Harbour hinterland.*

The NSW Government is committed to maintaining a viable, well maintained and connected TSR network for the future. The Crown Lands Management Review in 2012 found that many TSRs are no longer used for their original purpose.

A new, comprehensive review of the network will examine the parcels of land required for the TSR network in the future.

The aim of the TSR review is to determine which TSRs are still used or required for the original purpose they were set aside for and to determine if they are important for other reasons. This information will feed future decisions about how this land can be best reserved, managed and owned.

Farmers, bushwalkers, campers and fishers, aboriginal communities and environmental groups—LLS wants to hear from you.

The information will also be used to develop a comprehensive map of the TSR network in NSW — where they are, what they are now used for, who uses them and how often.

Read through the consultation paper and have your say about the future of the TSR network in NSW.

To assist in responding to the discussion points raised in the consultation paper, the government has created an online mapping tool to allow you to investigate TSRs in your local area. The mapping tool is available through the LLS website.

Having a say about the future of the TSR network in NSW is easy :

Read through the consultation paper. Read through a quick guide on how to make a submission.

Complete an [online submission](#).

Alternatively, you can lodge your submission by email or post a hard copy to Local Land Services, State Operations, PO Box 2105, Dubbo, NSW, 2830.

Submissions have been extended to 5 pm on Friday 7 July 2017.

If you know any of these places, you may have an important point to make—what is special about these places. These reserves have not been farmed and could house some rare plant communities.

NSW Local Landcare Coordinator Initiative (LLCI)

In 2015 the NSW Government provided a \$ 15 million commitment over 4 years to fund the Local Landcare Coordinators Initiative (LLCI). The goal of which is to 'renew the government – community relationship and unlock the full potential of the thousands of volunteers in the Landcare network'. The initiative is collaboratively managed by Landcare NSW and NSW Government through Local Land Services via a Joint Management Committee. There are three main components of the program: Local Landcare Coordinators, Community of Practice and the Sustaining Landcare Project. Through the Local Landcare Coordinator component, a network of locally-based coordinators who work with their host organisations and local Landcare groups to deliver strategically aligned programs, support and guidance is being funded. There are currently 66 part time Local Landcare Coordinators around the state funded under this initiative. The funding will run for 3.5 years from Jan 2016 to June 2019.

In Coffs Harbour Regional Landcare this program funding covers a 0.35 EFT (Equivalent Full Time) Local Landcare Coordinator position.

The coordinator's role is to build capacity and connections within communities by:

- Supporting and increasing community engagement
- Extending the network's coverage to support more groups, landholders
- Undertaking planning, developing partnerships and securing resourcing to improve financial sustainability
- Participating in activities that address critical agricultural and sustainability issues
- Linking to Local Land Services and other Government agencies and organisations to develop on-ground natural resource management projects.

Here at Coffs Harbour Regional Landcare we are hard at work fulfilling the objectives of this role and will keep you informed of our activities. For more information on the NSW Local Landcare Coordinators Initiative and its different components please visit: <http://landcarensw.org.au/resources/landcare-coordinators/>



AUSTRALIA NEW ZEALAND BIOCHAR CONFERENCE 2017 ANZBC17

August 10-12, 2017

Murwillumbah Civic & Cultural Centre and Showgrounds,
bring together Scientists & Growers to bridge the gap between fundamental science, applied science & commercial applications, to unite the various Biochar groups from each State in Australia & New Zealand, to showcase the very latest technology to match the biomass source, value added bio-products, methods of applications and scientific results and commercial trial methods and results. This event is designed for Growers, Farmers, Foresters, Policy Makers, Biochar Producers, Industry Professionals and Entrepreneurs. Students and interested citizens will also benefit from this event.

Website for programme: <https://anzbc.org.au/>



Australia's Environment Explorer

This online mapping tool is put together by the Australian National University and is fascinating! You can zoom into any of our landscapes and get data on tree cover, exposed soil, rainfall and run-off as well as soil moisture, fire intensity and occurrence and much more! Just type **Australian Environment Explorer** into your internet search engine.

19th NSW Weeds Conference 2017



Experience the Highs - working smarter together

16 - 19 October 2017; Armidale, NSW

Our theme of Experience the highs – working smarter together looks to build on the successes of the past whilst looking to the future as we transition into this new era in weed management and control, an approach that must be based on regional cooperation as well as providing a common focus for the actions of the numerous land managers across all tenures.

With this in mind, session themes will broadly revolve around Biosecurity in Action; Technology & Innovation; Community, Extension & Social Marketing; Collaboration & Case Studies with a special feature being the Open Debate.

Early Bird registrations close 1 September 2017.

For more information:

<http://conferencecompany.com.au/weedsconference/>



Happy New Year!!

The New financial year is here and that means member subs and log books are due.

See page 2 for details.



Australia's Environment Explorer

2016 ▾



Vegetation cover



Fire



Soil moisture, precipitation



Inundation, river flow



Exposed soil



Carbon

Supported by



Local Land
Services
North Coast



Australian Government

National
Landcare
Programme





\$ 100 million for Landcare

- some News at last!

We have finally have some news on the additional \$100 million for Landcare that was announced in

the MYEFO in December!

In the last few months the National Landcare Network, together with Landcare Australia, has been in discussions with the Australian Government and the Australian Greens to try and ensure that this money is spent in a way which will bring benefits to Landcarers and farmers on the ground. We have now had confirmation that:

- A first instalment of the funding will be available this financial year after budget announcements in May.
- Support for on-ground Landcare projects and small grants for sustainable agriculture and environmental projects will be prioritised in allocating this funding.
- \$15 million will be allocated to new Indigenous Protected Areas.
- Money will be available to support Landcare Australia in delivering the State and National Landcare Awards which celebrate the achievements of Landcarers.

The NLN and Landcare Australia met with Finance Minister Mathias Cormann's office at the end of March to confirm these allocations and to discuss various aspects of the budget as they relate to Landcare.

Our thanks to the Australian Government and Australian Greens for their ongoing commitment to Landcare!

NSW Landcare and LLS Conference

Albury 25—27 October.

Registrations before 25 September:

\$ 220 & \$ 110 for conference dinner.

Keynote speakers: Dr Karl Kruszelnicki and Stan Grant.

The motto of the conference is "Sharing our Stories".

And as for every NSW Landcare conference, The Landcare Muster is the opportunity for grassroots Landcarers to have their say about the direction of Landcare in NSW.



Local Land
Services
North Coast

NCLLS - new board members and General Manager

The Chair of the new LLS board as well as two board members were appointed by the Minister and another three board members were elected by LLS ratepayers:

Chair: Bob Smith, Mylestom

Appointed members: Mark Bulley, Port Macquarie and Tom Cooper, Bonalbo.

Elected members: Neil Summerville, Casino, Tom Amey, Casino, Trevor Wilson, Casino.

Only 38% of enrolled ratepayers voted in this election—obviously many in the Casino region.

The new General Manager of North Coast LLS is Louise Orr. Louise has extensive experience in the environment and natural resource management fields, starting her career with the NSW National Parks & Wildlife Service. Since then she has worked as an environment consultant across eastern Australia, managed professional teams within Queensland.

wildlife-friendly fencing

Here at the Landcare office we have brochures on wildlife-friendly fencing and netting with some very sad photos. Personally, I have only experienced the problem twice: Once a flying fox was caught and had died where a fencing wire was strung across a dam. Flying foxes drink by skimming the surface of water with their chest and then licking themselves. This one had hit the wire and got caught.



The other time was last week-end when I saw a strange shape hanging on a barbed-wire fence. It turned out to be a Tawny Frogmouth, alive, who had hooked and embedded the wire into his eye-socket. We got him out and to a WIRES carer but his chances of catching prey with one eye, should he survive the

injury, is probably slim.

Wildlife friendly fencing takes our native animals into consideration and avoids barbed wire where possible. Plain wire as the top strand is a good compromise for a farm fence.





From Blueberry Bulletin No. 38: Taking the Blues out of blueberry development

A successful workshop held in Coffs Harbour between state agencies, Local Government and the Australian Blueberry Growers Association has provided opportunity to exchange information between government and industry and to identify strategic options to better plan for future development.

Outcomes from the day included:

- Increased recognition of the industries contribution to the regional economy;
- Identification to improve communication and exchange of information between agencies and industry;
- Commitment from industry to lead the development of a code of practice to assist in self-regulation and engage and educate new entrants.

Agriculture NSW convene an Inter-agency Working Group to help ensure the sustainable and guided expansion of the Blueberry Industry. The group has published a factsheet '[Who to consult when planning for blueberry development](#)' available in English and Punjabi, which highlights consultation requirements with relevant agencies on land, water and biosecurity legislation, prior to purchasing or developing land for blueberry production.

Botector® biological botrytis control trial

A new biological fungicide for the control of botrytis is currently being trialled in blueberries. The product works by spreading a highly efficient microorganism (*Aureobasidium pullulans*) which prevents the pathogen *Botrytis cinerea* from colonising infection sites on the berry surface. Therefore it works through natural competition for space and nutrients. An update on the efficacy of this product will be provided once the trial has completed.

Organic weedkiller option

'Slasher' Weedkiller is a relatively new registered organic herbicide that kills weeds, moss, algae and lichen. It is a non-selective contact weedkiller. The active constituent is nonanoic acid which is derived from plant oils. Care must be taken when spraying around other plants as spray drift can cause damage.

Planting creeks on Blueberry Farms

This is a new development in our Blueberry Projects - farmers agree to and support the planting of creeks with native vegetation. They realise the nuisance value of the weeds that occur there, with Madeira Vine and Morning Glory causing problems when they grow up on the netting. As well, where creeks are eroding, they



cause netting structures to collapse.

KB planting an old causeway at his farm at Condons Road, Sandy Beach.

This project is jointly funded by the National Landcare Program through NC LLS and by the Coffs Harbour City Council Environmental Levy. The project will continue in the next financial year with Simon Proust as soil conservation expert and Mel Craig supporting it at the CHRL office.

A research project at a Blueberry farm at Shepparton in Victoria has found that placing native vegetation on the farm created a so-called 'Insectarium', a place for beneficial insects to live, which benefits the farm. That experiment used only four species of native plants and already, the results were very positive. We'll see what



we can achieve here, using more variety.



3rd annual Blueberry Field Day

To date, this was our largest, best attended field day for blueberry growers with 40 participants on 2nd June.

Jas Benning made his farm available for the day and took the group on a short tour through his rows and to the small riparian revegetation site established there as part of this year's CHRL blueberry project.

The project was funded jointly by North Coast Local Land Services and Coffs Harbour City Council's Environmental Levy.



The farm looked a picture and Jas talked about his removable netting system. The biggest advantage of that is that nets are easy to reach when they require repairs after strong winds or hail. However, lifting the netting up for machinery to enter between rows slows operations down significantly and taking nets down and putting them up again at the end and beginning of the fruiting season is a big job.

One of our speakers was Tom Damaschke, reptile coordinator for WIRES (Wildlife Information & Rescue Service). Tom commented very positively on the fact that all the netting on this farm was neatly rolled and tied rather than draping on the ground. Tom has found as many as four dead Blacksnakes on a farm, tangled in netting.

Simon Proust, Soil Conservation consultant to our project, stressed the importance of groundcover to avoid soil erosion on farm. 70% of the ground should be the minimum that is occupied by grass or other vegetation in order to hold soil together.

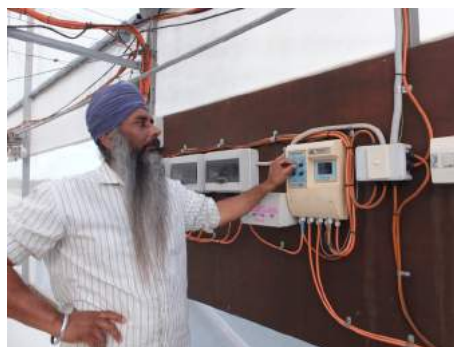
Phil Santos is the bush regeneration contractor who worked here on weed control, mostly focussing on Camphor laurel seedlings. While Jas has undertaken extensive camphor control along the waterway dissecting the farm, some trees had been missed and young ones were coming up. Phil also supervised the planting of native trees in this zone, species recommended as suitable for blueberry farms by project coordinator Pia Dollmann. This species list available on the CHRL website.



Blueberry Grower Interviews

This research project was undertaken by Geoff Kaine, a well-known Australian researcher into farming practices and farmer preferences who now lives in New Zealand. Geoff spoke to key blueberry industry people and to growers to find out what their priorities are in terms of soil erosion control and irrigation practices. His report has been made available to all participants.

Pia travelled with Geoff to some of the farms and the trend is now for farmers to move to larger holdings with less slope. Growers are also becoming very sophisticated with their irrigation technology - measuring soil moisture and adjusting the irrigation accordingly. These systems are controlled by computer and communicate to the grower via the mobile phone, wherever he is.



Pardip with control in his hi-tech greenhouse.



Worksites

Site coordinators please note: The following information is sourced from your membership & log books/work records forms, if it is not correct please let CHRL know, phone 6651 1308 or email chrl@coffslandcare.org.au

Arrawarra Coastcare: Volunteers working monthly on littoral rainforest at the southern end of Corindi Beach. Contact David Bryant 6649 2825.

Bakker Drive Landcare: Volunteers look after the creek area adjacent the park. Contact Robyn Thomson on 0429 032005

Bundagen Landcare: Aloka Reeves coordinates Landcare work at Bundagen. Please contact the office & we will put you in touch with them.

CHRL Nursery: Dedicated plant enthusiasts who meet each Wed. & Thurs. Phone the CHRL office 66511308.

Eastern Dorrigo Landcare: Continue work on riparian zones on public & private land. Contact Rose Finger 66545212

Emerald Beach Dunecare: Volunteers continue to work on the dunes and riparian zone. They meet on the 3rd Sunday of the month. Contact Roger Sharpe 0490 091 546

Green Bluff Landcare: Work on Green Bluff Headland at Moonee Beach. Contact Lindy Davis 0448 651 239

Friends of Coffs Creek: Meet 1st and 3rd Saturdays from 9-12, Mondays 8-2.30, Tues 8-2.30, and Thurs 8-11. Ph Elisabeth Edwards for more information 0400 579 426.

Jarrett Creek Landcare: Looking for more volunteers to join in this active site at Woolgoolga. Contact the CHRL office.

Jetty Dunecare Group Inc: Continuing their bush regeneration work in the Jetty area. Meet Tues and Sat from 7.30am. Contact Jane Ireland on 6652 4389.

Karangi Landcare Group: Meet monthly to weed areas around the Cemetery. Contact Ron Smith 66538249

Karangi Public School: Karangi School students continue to work along Karangi creek each fortnight.

Kinchela Reserve Landcare: Meeting on the 2nd Sunday of each month. Ph: Helen Lawrence 6653 2015

Korora Basin Landcare: Meet the 1st Sat of every month, alternating between public & private land. Ph: Simon Proust 0412 825 395

Korora Dunecare: Due to lack of volunteers this site is in hiatus. Volunteers wanting to work on Korora's fore-shore should contact the CHRL office.

Macauleys Headland Landcare: Frank Kennedy and his team are restoring the vegetation on this site in the Regional Park. Contact the CHRL office to get involved.

Mullawarra Dunecare: Meet on the last Saturday of the month. Contact Roger Jennings 6654 1203.

Nana Glen Landcare Group: Working bee every third Saturday. Contact Peter Franklin 6654 3452.

Pacific Villas Landcare: Work in the Regional Park at Charlesworth Bay. Contact Max Brinsmead 0409870346

Park Beach Dunecare: Volunteers meet on Fridays at 9am between the Hoey Moey and the Bowling Club. Contact Rosemary on 6652 5940 or Judy on 6651 7691.

Pearce Drive Reserve Landcare: Reestablishing rainforest in the riparian zone in West Coffs. New volunteers warmly welcomed. Ph Jeff Alcott: 0438 655 728

Red Rock Landcare: Various locations around Red Rock. Contact Rose & Vern Treilibs 0418 112 390.

Safety Beach: Working bees on the 1st Saturday of the month, 8—10 am. Contact the office.

Sandy Beach Dunecare: Working bees on Fridays, 8 - 12 at Sandy Beach. Contact Peta Fairbairn 6656 2255.

Sapphire Reserve Landcare: Contact Greg Robinson 0429 922 845 or grob1418@gmail.com Volunteers meet every second Sunday 8.30 – 10.30am

Sawtell Bushcare: Charlie England would like more volunteers to join him rehabilitating Dolman's Point, Sawtell. Further details from the CHRL office.

Sawtell Dunecare: Continue rehabilitation of the dunal zone at Murray's Beach. Ph: Barry Powells 0466 347 364

Serenity Landcare: Volunteers regularly work along Serenity Beach and Look at me now Headland. Contact Karina Rothacker 0408 209 995 .

Treefern Creek: Restoring riparian vegetation along a tributary of Coffs Creek every second Saturday of the month. Contact Kris Hely on 0427 536 782

Woolgoolga Main Beach Dunecare: More volunteers are needed. Contact the CHRL office to get involved.

Woolgoolga Back Beach Dunecare: Working bee - 2nd Sunday of each month, 8-11am, meet at the back beach picnic area at the end of High St. Contact Alex Groot 6654 2833

Coffs Harbour Regional Landcare Inc

27 Park Avenue
PO Box 1730
Coffs Harbour NSW 2450
Phone: 6651 1308
E-mail: chrl@coffslandcare.org.au
Web: www.coffsharbourlandcare.org.au

This newsletter is produced with support from the Community Capacity Support program which is supported by North Coast Local Land Services, through funding from the National Landcare Programme and from the NSW Government's Catchment Action NSW.

Contacts

CHRL President: Barry Powells	0466 347 364
CHRL Pia Dollmann (Mon, Tue)	6651 1308
CHRL Jude Turner (Mon, Wed, Thurs)	6651 1308
CHRL Mel Craig (Mon, Tues, Thurs)	6651 1308
Northern Rivers Local Land Services:	6659 9400
Coffs Harbour City Council (Coastal Works) Acting Technical Officer Open Spaces: Jon Murray	
	6648 4541
OEH Coffs Coast Regional Park Rangers:	
Mark Watt	6652 0928
Lynn Rees (volunteer coordinator)	6652 0909

Coffs Harbour Regional Landcare Inc



Bush to Beach News

Supported by



Local Land
Services
North Coast



Australian Government

National
Landcare
Programme



Coffs Harbour Regional Landcare Inc
PO Box 1730
Coffs Harbour NSW 2450

Postage
Paid